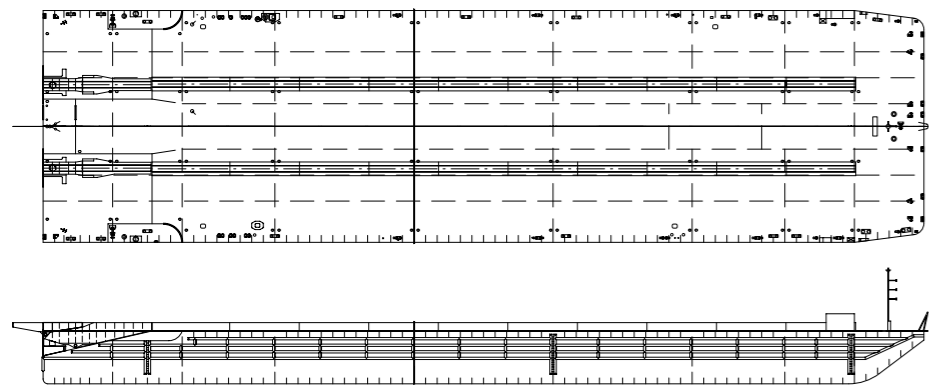


# S44

## LAUNCHING/CARGO BARGE



### TYPE

Flat bottom/Flat deck

### CLASSIFICATION

R.I.Na.

### DIMENSIONS

190 m x 50 m x 11.4 m

### GROSS TONNAGE

30,760 t

### FREE DECK AREA

8,500 sq.m

### BALLAST TANK CAPACITY

84,850 cu.m

### FUEL OIL CAPACITY

60 t

### JACKET WEIGHT

Up to 30,000 t

### OPERATIONAL FEATURES

Flush deck with bow and stern load out capability

### JACKET HANDLING SYSTEM

Skid beams: 2 x 164 m skid beams  
PTFE lined with paths for jacking units. Rocker arms: 2 x 30.5 m long double hinge type.  
Allowed hinge reaction: 12,000 t each.

### EQUIPMENT

Ballast system: 4 E./pumps  
1,200 cu.m/h. each  
Two remote control stations  
Fire/bilge system: 1 E./pump  
200 cu.m/h.  
Electric power plant: 2 D/generators  
320 kw/each 320 V/50 Hz.  
1 aux. D/generator 15 kw  
Air service at 25 kg/sq.cm by:  
2 main compressors 190 cu.m/h.  
1 cold starting compressor 25 cu.m/h.  
2 reservoirs 6 cu.m/each

### MOORING EQUIPMENT

1 E./hydraulic anchor winch - 60 t  
1 bow bridle recovery winch - 15 t  
with PS & STB warping heads  
for mooring  
2x Stern 10 t mooring winches  
PS & STB  
Towing system suitable for 3  
simultaneously connected tugs.  
Bridle chain of main towing line  
suitable for a tug pull of 250 t