

# SAIPEM 3000





### **CONVERSION DESCRIPTION**

Saipem has converted the former vessel "Maxita" into a fully redundant DP Heavy Lift vessel named "Saipem 3000" by replacing a completely new stern section and installing a CLYDE 76 model 2,400 st crane. The new configuration consists in a monohull unit with the following particulars: length 162 m, breadth 38m and depth 9m, self-propelled, with heavy lifting crane, associated to a DP system Class 3. The vessel will be suited for worldwide operations in the most severe environmental conditions.

The main crane (with relevant tub foundation) has been dismantled from the HLV named "Pearl Marine" and erected into the stern. Main crane foundation has been integrated into the new structure on which two azimuthal and retractable thrusters for propulsion and for dynamic positioning are installed.

The A-frame of Clyde crane has been shortened in order to reduce our draft for passage through Suez Canal.

Furthermore existing accommodation and relevant systems have been upgraded to lodge 211 persons as per safety appliance.

Converted vessel has dual classification: ABS and DNV.

## CLYDE CRANE - MAIN CHARACTERISTIC

### CRANE TYPE:

2,400 st fully revolving, self powered,  
crane model Clyde 76 DE 220 + 35 + 30

Manufacturer:

CLYDE (Serial number: CW 4015)

Built Year:

1976 - Upgrading: from 2,000 st to 2,400 st  
in 1987; full reconditioning in 2003

### CAPACITY:

Main hook:

2,400 st at 130 ft (2,177 t at 39,6 m), revolving with 1° cross angle

Auxiliary Hook:

600 st at 141 ft (544 t at 43 m)

Whip hook:

75 st at 272 ft (68 t at 83m)

### UNDERWATER OPERABILITY (NO COMPENSATING SYSTEM):

Auxiliary Hook:

544 t @ 290 m below boom hinge

148 t @ 1,010 m below boom hinge

49 t @ 2,090 m below boom hinge

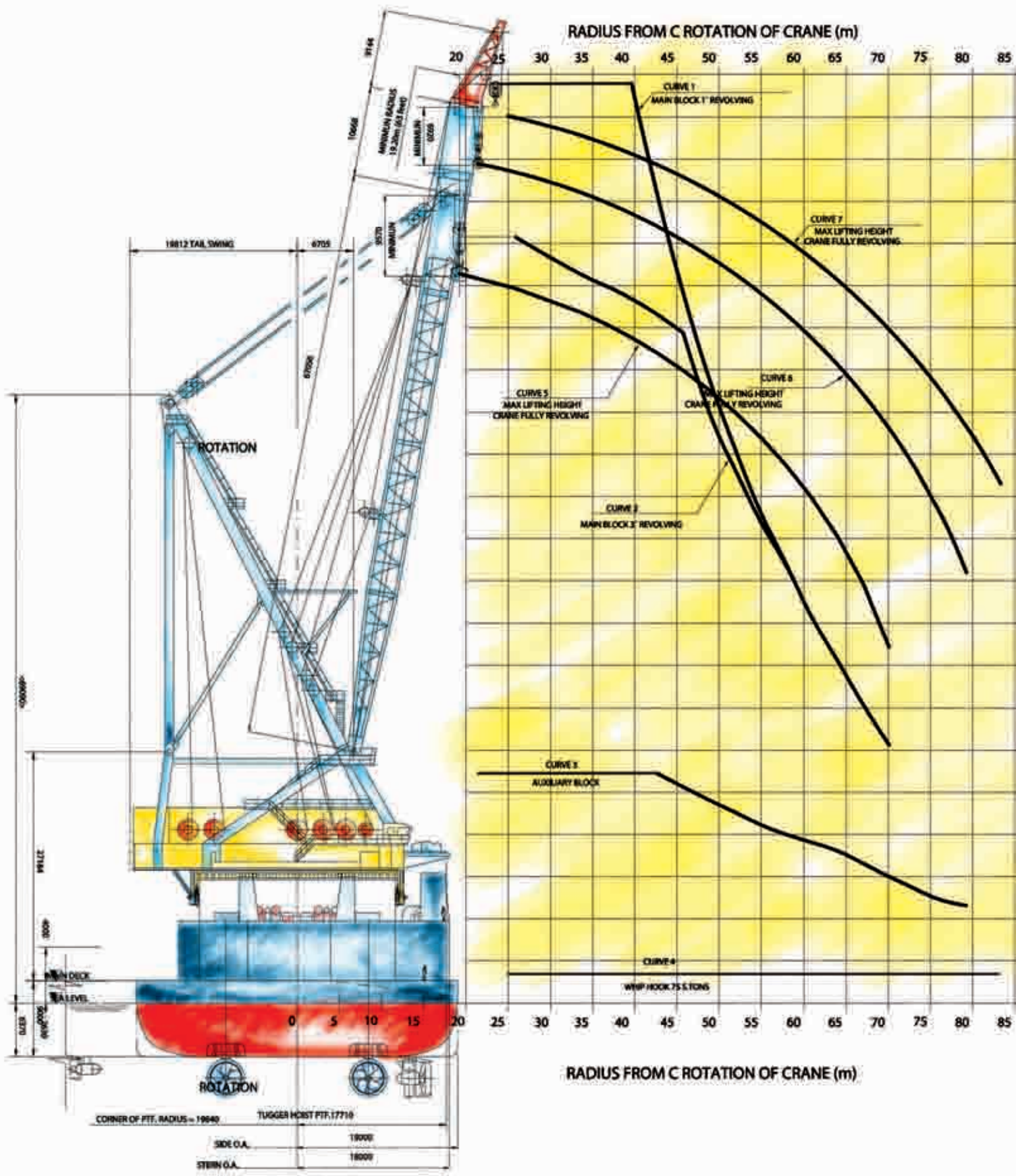
AHC Winch for subsea operation: 350T capacity in single mode,

700T capacity in double fall mode











## MAIN PARTICULARS

Type: Monohull HLV, dynamically positioned.

Class: ABS and DNV

ABS Class Notation: A1 - AMS, DPS-3, ACCU, CRC

DNV Class Notation: X1A1 DYNPOS AUTRO E0 HELDK (ERN 99.99.93)

NMD: Letter of compliance

Conversion Delivery completion: April 2003, Singapore

Flag: Bahamas, Port of registry: "NASSAU"

## DIMENSIONS:

Length overall: 162 m

Breadth: 38 m

Depth to main deck: 9 m

Summer draft: 6,308 m

Displacement: 31,731 t at summer draft 6.3m

Gross Tonnage: 20,639 t

## MAIN DATA:

Accommodation capacity: 211 persons as per safety appliances

Clients office suite, gymnasium, recreation room and lounge

Helideck: Standard Sikorsky- 61N - Super Puma

Vessel propulsion/positioning: Total Thruster's Power: 19.1 MW

Total Bollard Pull: 288 t

Main propulsion stern thruster: 2 x 4,500 kW approx.; B.P.= 77.5 t/each

Model LIPS FS 3500 671 MNR (fixed pitch, retractable and azimuthal, for station keeping and transit mode)

Azimuthal retractable thrusters: Thruster FWD: 2 x 2,684 kW (3,600 HP); B.P.= 36.6 t/each

Thruster AFT: 2 x 2,073 kW (2,780 HP); B.P.= 30 t/each

Tunnel thrusters: FWD 1x1200kW; B.P: 16.8kN

Transit speed: 8Kn

DP/PM systems: DP/PM System, fully redundant Class 3 A1 - AMS, DPS-3, ACCU, CRC

DP Reference System: 2 x DGPS, 2 x Hipap

Electrical Power Supply: 6,6 kV, 440 V, 60 Hz.

Tot. Power: 22 MW

Nr. 2 x 5,550 kW CaterpillarMak 12CM32

Nr. 2 x 3,200 kW Mitsubishi MAN

Nr. 2 x 2,250 kW Bergen

Emergency Gen. 350 kW / 440 V, 60 Hz

Tank Capacities: Water Ballast: 22,300 t,

Fresh Water: 600 t, LO: 88 t

Bunker capacity (MGO): 2,600 t

Fully DP operating for at least 50 days,

Transit: range 18,500 n.m.

Crane capacity: CLYDE Model 76, 2,400 st fully revolving;

HYDRALIFT 15 t at 25 m pedestal crane

AHC NOV crane: 20T@25m (2000m W.D.)

Storage Areas: Free deck Area: 3,000 sqm approx.

Max. local uniform deck load: 18 t/sq.m

Moon pool Provision for 6 m x 6 m.

Mooring system: 2x22 t windlasses and 6x12.5 t mooring winches

Pile Hammer: MHU 600, 1000 e 1700. Self diesel driven hydraulic power pack plus umbilical winch

Crawler crane: American Hoist model 9310, 210 t lifting capacity

