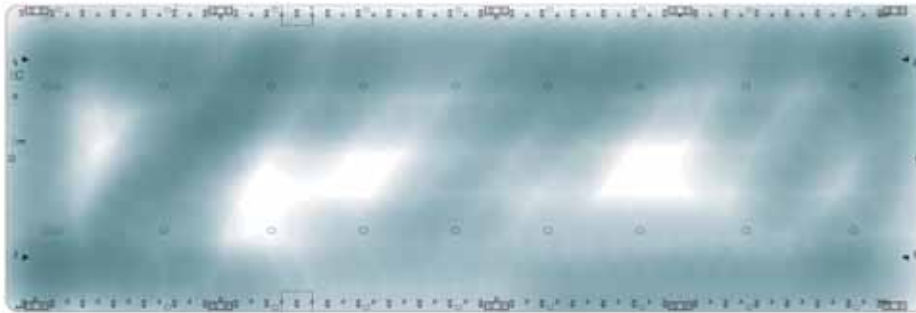


# CASTORO 14

HEAVY DUTY CARGO BARGE



## HULL TYPE

Square shaped barge with raked bow and stern with twin skegs

## CLASSIFICATION

Germanischer Lloyd:

✦100 A5 barge

## FLAG

Bahamas

## PORT OF REGISTRY

Nassau

## DIMENSIONS

Hull length: 87.78 m

Hull breadth: 30.48 m

Hull depth: 6.71 m

Maximum draft: 5.36 m

Bow and stern slope: 3.5 x 7.6 m

Allowable deck load: 15 t/sq.m

## BALLAST TANKS

The barge has 2 internal longitudinal and 9 transversal BHDs which generate 30 ballast tanks, for a total capacity of 16,220 cu.m

## MOORING SYSTEM

One anchor 2.75 t

One hydraulic anchor winch 8 t

Storage capacity drum 330 m X Ø 9 mm wire rope on 5 coil

## GENERAL FEATURES

Towing gears in compliance with standard requirements for ocean passage



